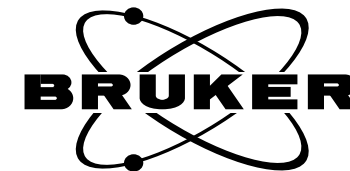


AS15 1H

3065.07  
3058.31  
2960.51  
2953.81  
2946.41  
2940.79  
2936.37  
2933.83  
2926.64

2063.54  
2057.82  
2052.06

1590.43  
1586.11  
1581.39  
1577.10  
1573.01  
1568.52  
1531.15  
1528.05  
1518.53  
1515.44  
1346.12  
1323.48  
1318.79  
1312.93  
1308.69  
1304.09  
1297.88  
1105.91  
1101.48  
1093.31  
1088.88  
996.32

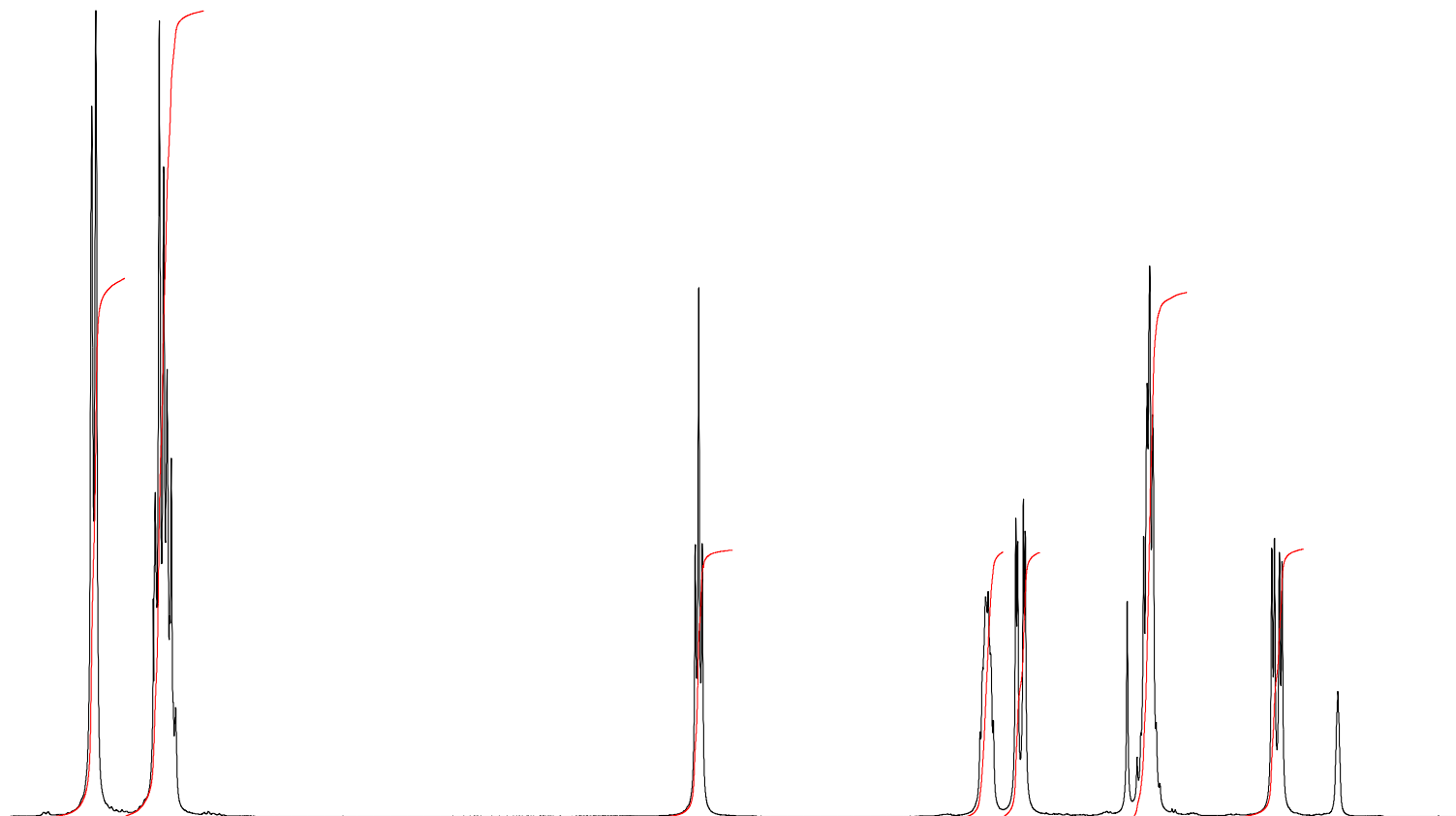


Current Data Parameters  
NAME 050426-as15  
EXPNO 2  
PROCNO 1

F2 - Acquisition Parameters  
Date\_ 20050426  
Time 19.09  
INSTRUM spect  
PROBHD 5 mm TXI 13C Z  
PULPROG zg  
TD 32768  
SOLVENT DMSO  
NS 8  
DS 0  
SWH 3205.128 Hz  
FIDRES 0.097813 Hz  
AQ 5.1118579 sec  
RG 16  
DW 156.000 usec  
DE 86.57 usec  
TE 298.0 K  
D1 10.0000000 sec  
MCREST 0.0000000 sec  
MCWRK 0.0150000 sec

==== CHANNEL f1 =====  
NUC1 1H  
P1 4.85 usec  
PL1 0.00 dB  
SFO1 400.1320007 MHz

F2 - Processing parameters  
SI 32768  
SF 400.1300068 MHz  
WDW EM  
SSB 0  
LB 0.10 Hz  
GB 0  
PC 1.00



7.5 7.0 6.5 6.0 5.5 5.0 4.5 4.0 3.5 3.0 2.5 ppm

2.02  
3.02

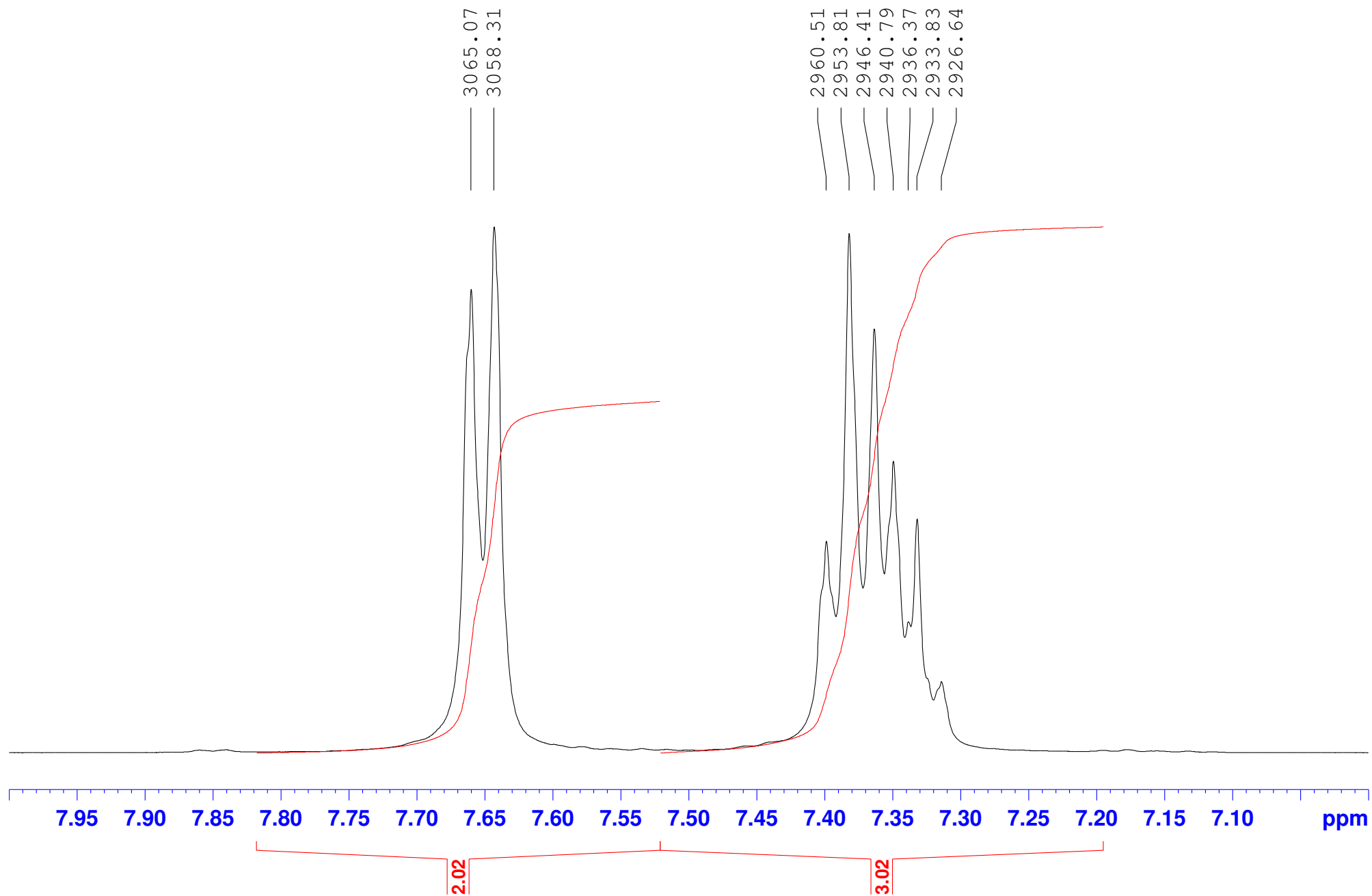
1.00

0.99  
0.99

1.97

1.00

AS15 1H



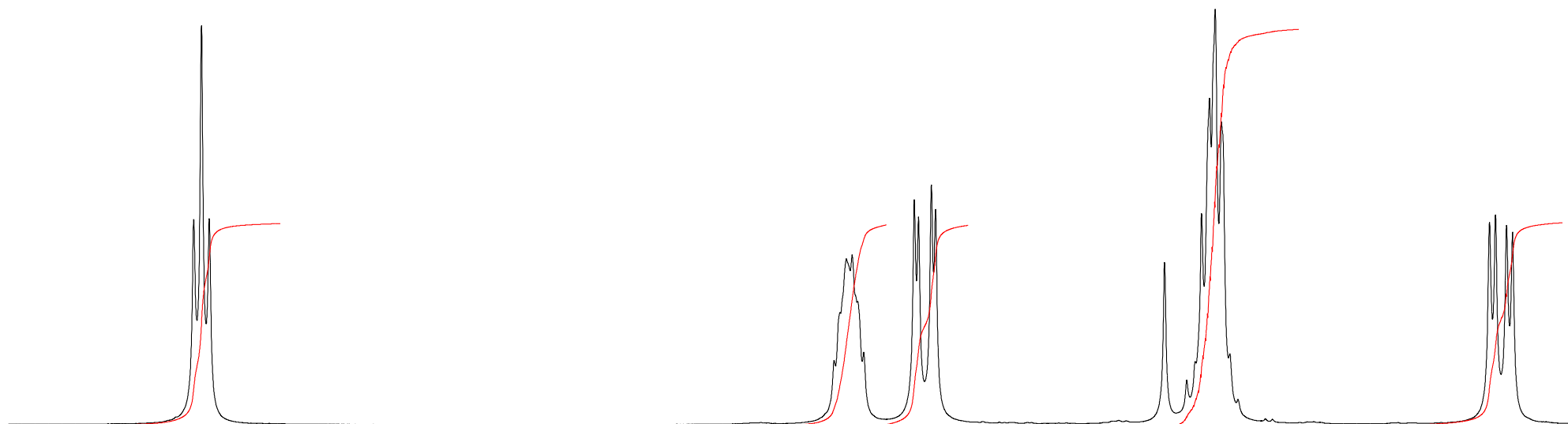
AS15 1H

2063.54  
2057.82  
2052.06

1590.43  
1586.11  
1581.39  
1577.10  
1573.01  
1568.52  
1531.15  
1528.05  
1518.53  
1515.44

1346.12  
1323.48  
1318.79  
1312.93  
1308.69  
1304.09  
1297.88

1105.91  
1101.48  
1093.31  
1088.88



5.4 5.3 5.2 5.1 5.0 4.9 4.8 4.7 4.6 4.5 4.4 4.3 4.2 4.1 4.0 3.9 3.8 3.7 3.6 3.5 3.4 3.3 3.2 3.1 3.0 2.9 2.8 ppm

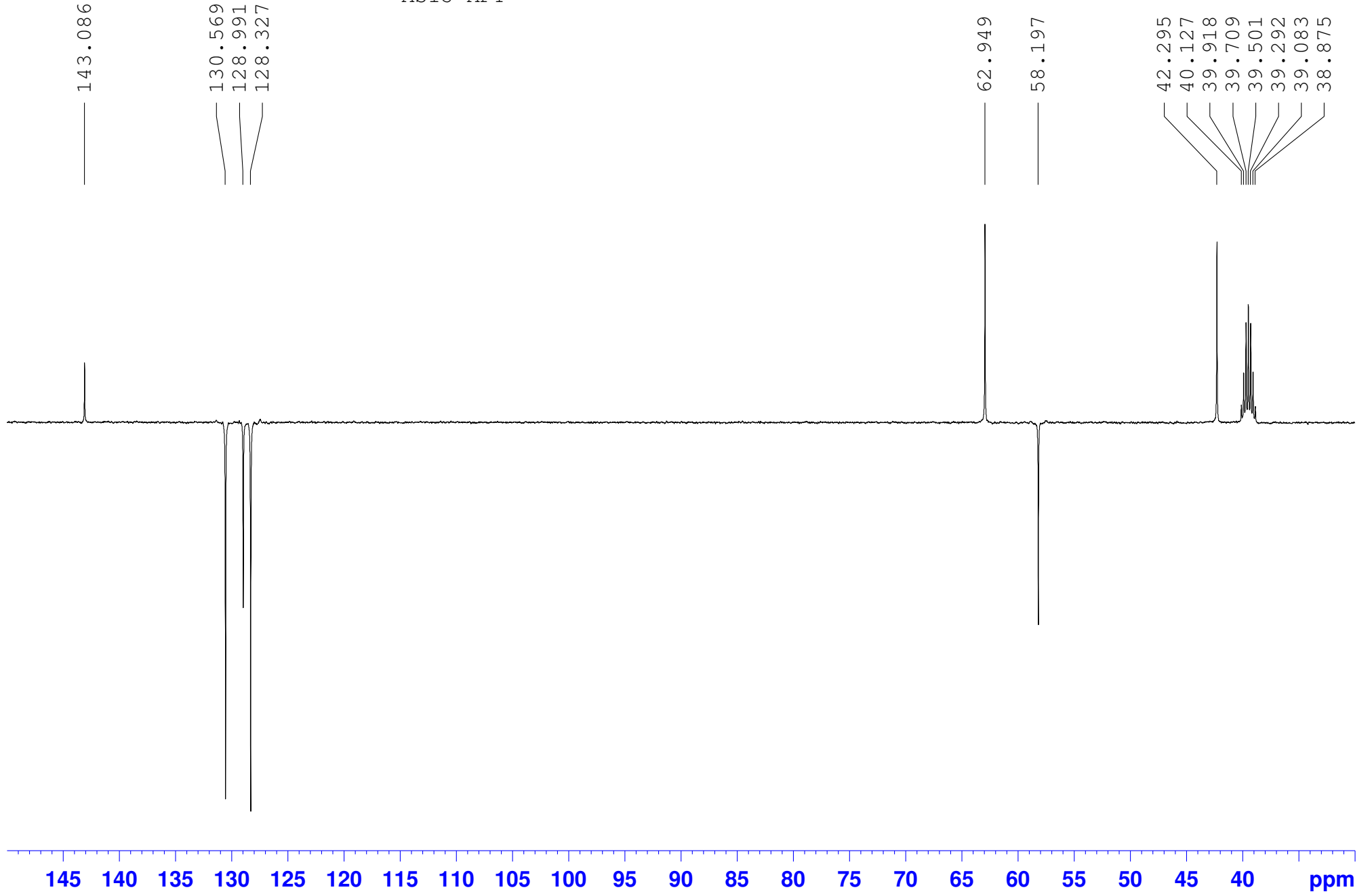
1.00

0.99 0.99

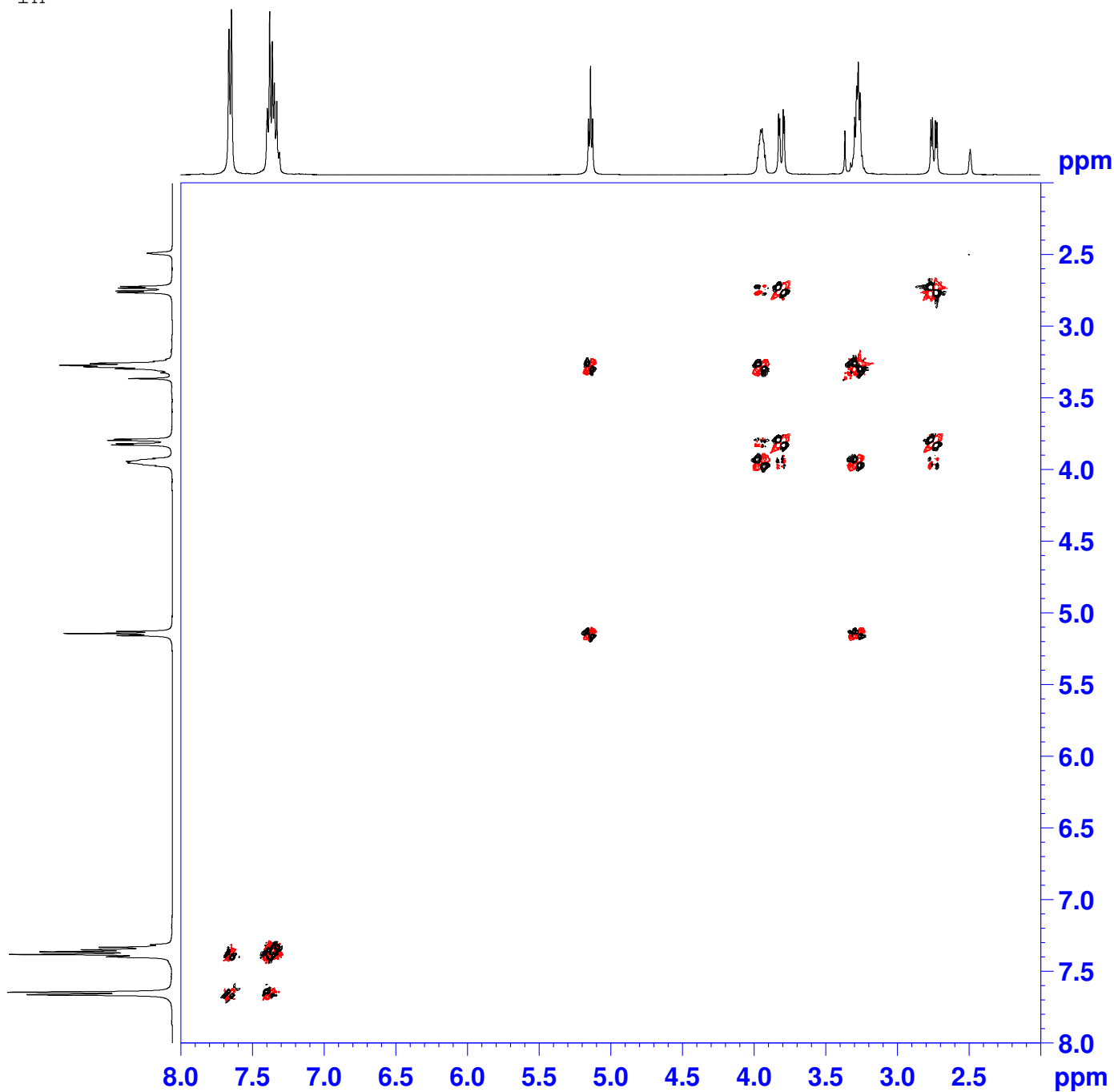
1.97

1.00

AS15 APT



AS15 1H



Current Data Parameters  
NAME 050426-as15  
EXPNO 4  
PROCNO 1

F2 - Acquisition Parameters  
Date\_ 20050426  
Time 19.58  
INSTRUM spect  
PROBHD 5 mm TXI 13C Z  
PULPROG cosygmftp  
TD 2048  
SOLVENT CDCl3  
NS 8  
DS 4  
SWH 3205.128 Hz  
FIDRES 1.565004 Hz  
AQ 0.3195380 sec  
RG 16  
DW 156.000 usec  
DE 6.00 usec  
TE 298.0 K  
d0 0.00000300 sec  
D1 2.00000000 sec  
d13 0.00000300 sec  
D16 0.00020000 sec  
d20 0.00120300 sec  
IN0 0.00015600 sec

==== CHANNEL f1 =====  
NUC1 1H  
P1 4.85 usec  
p2 9.70 usec  
PL1 0.00 dB  
SFO1 400.1320007 MHz

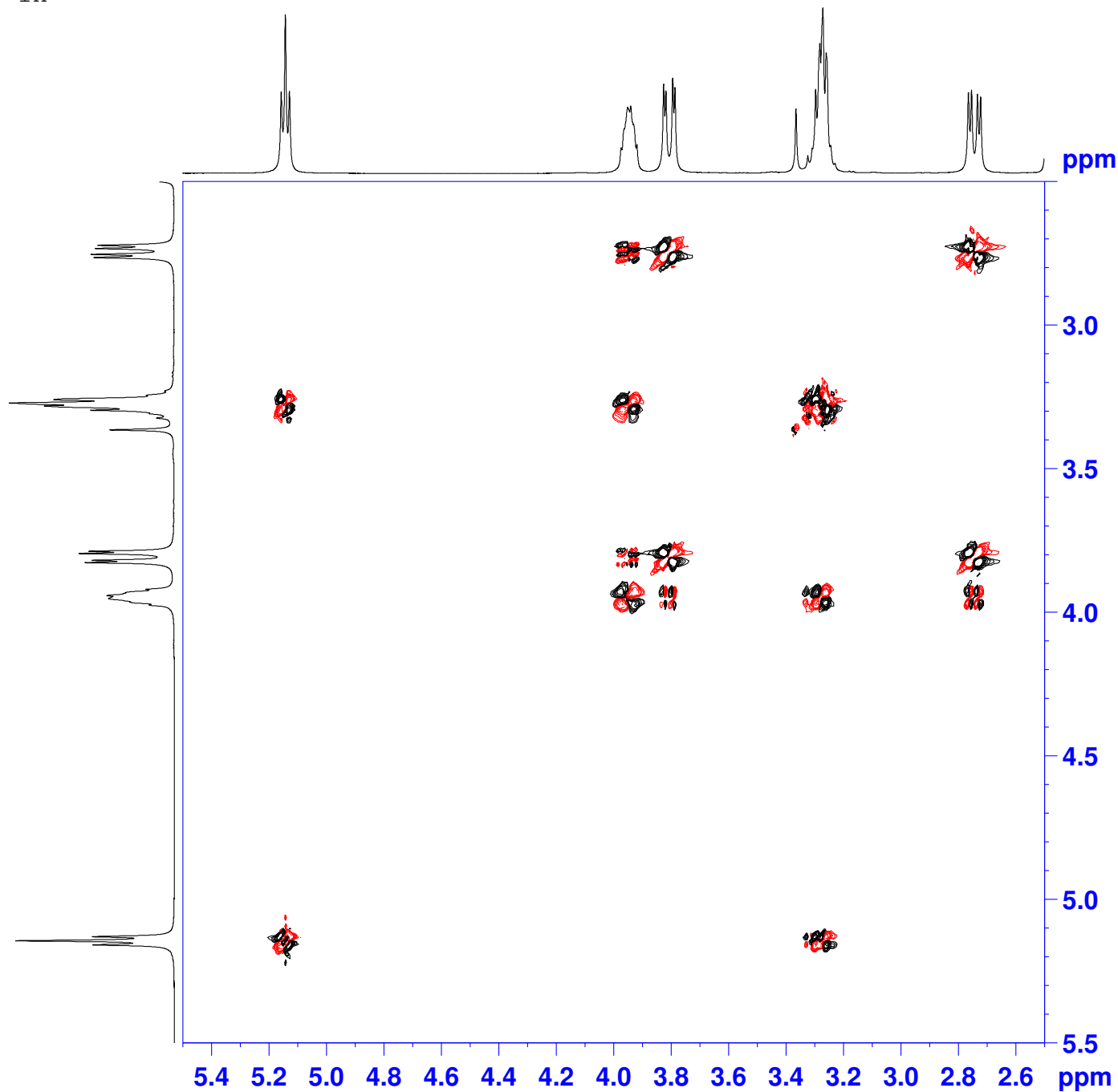
===== GRADIENT CHANNEL =====  
GPNAM1 SINE.100  
GPNAM2 SINE.100  
GPX1 0.00 %  
GPX2 0.00 %  
GPY1 0.00 %  
GPY2 0.00 %  
GPZ1 10.00 %  
GPZ2 20.00 %  
P16 1000.00 usec

F1 - Acquisition parameters  
ND0 2  
TD 512  
SFO1 400.1322 MHz  
FIDRES 6.260016 Hz  
SW 8.010 ppm  
FnMODE undefined

F2 - Processing parameters  
SI 1024  
SF 400.1300067 MHz  
WDW QSINE  
SSB 2  
LB 0.00 Hz  
GB 0  
PC 1.00

F1 - Processing parameters  
SI 1024  
MC2 TPPI  
SF 400.1302293 MHz  
WDW QSINE  
SSB 2  
LB 0.00 Hz  
GB 0

AS15 1H



Current Data Parameters  
NAME 050426-as15  
EXPNO 4  
PROCNO 1

F2 - Acquisition Parameters  
Date\_ 20050426  
Time 19.58  
INSTRUM spect  
PROBHD 5 mm TXI 13C Z  
PULPROG cosygmftp  
TD 2048  
SOLVENT CDCl3  
NS 8  
DS 4  
SWH 3205.128 Hz  
FIDRES 1.565004 Hz  
AQ 0.3195380 sec  
RG 16  
DW 156.000 usec  
DE 6.00 usec  
TE 298.0 K  
d0 0.00000300 sec  
D1 2.00000000 sec  
d13 0.00000300 sec  
D16 0.00020000 sec  
d20 0.00120300 sec  
IN0 0.00015600 sec

==== CHANNEL f1 =====  
NUC1 1H  
P1 4.85 usec  
p2 9.70 usec  
PL1 0.00 dB  
SFO1 400.132007 MHz

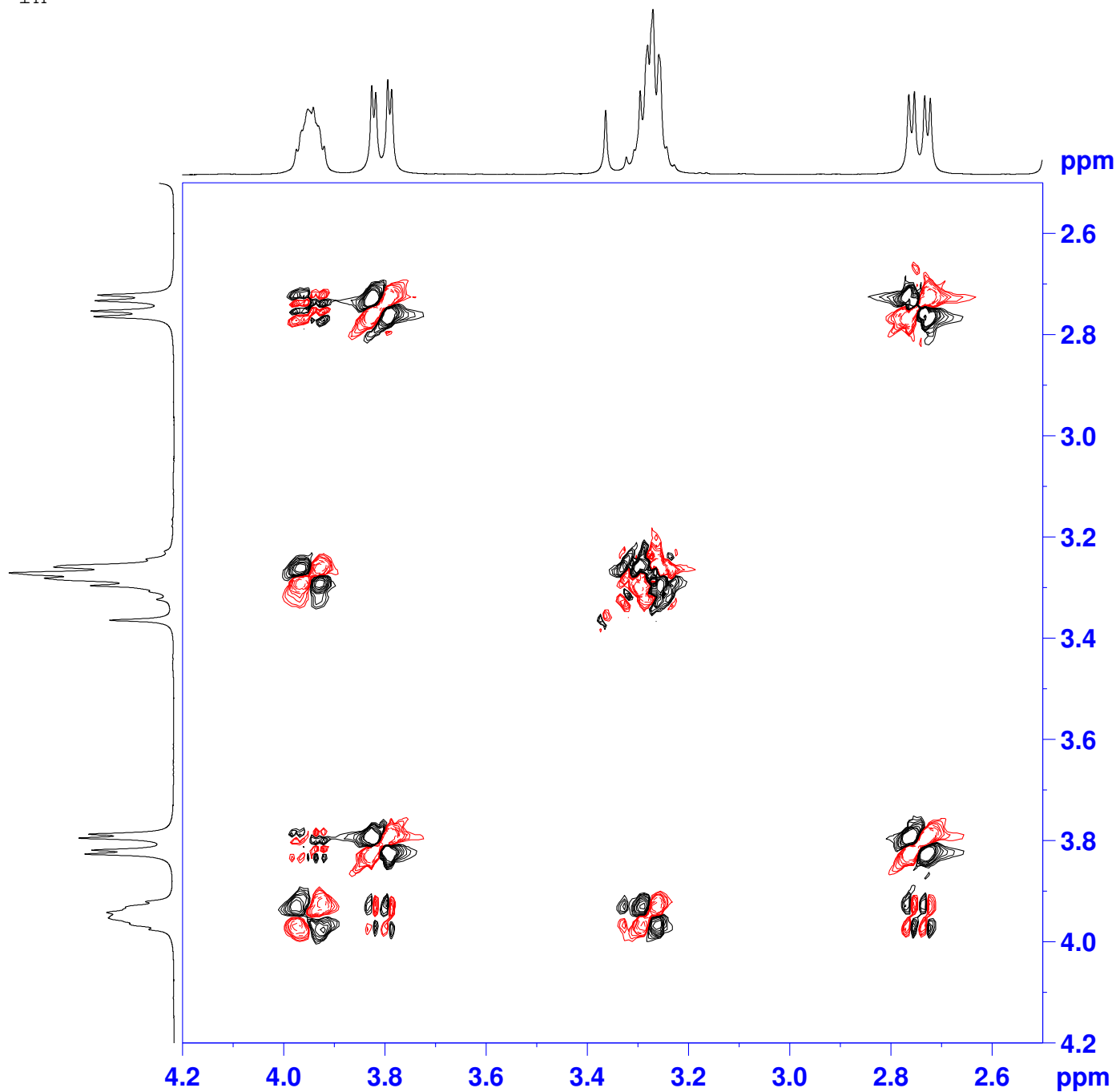
===== GRADIENT CHANNEL =====  
GPNAM1 SINE.100  
GPNAM2 SINE.100  
GPX1 0.00 %  
GPX2 0.00 %  
GPY1 0.00 %  
GPY2 0.00 %  
GPZ1 10.00 %  
GPZ2 20.00 %  
P16 1000.00 usec

F1 - Acquisition parameters  
ND0 2  
TD 512  
SFO1 400.1322 MHz  
FIDRES 6.260016 Hz  
SW 8.010 ppm  
FnMODE undefined

F2 - Processing parameters  
SI 1024  
SF 400.1300067 MHz  
WDW QSINE  
SSB 2  
LB 0.00 Hz  
GB 0  
PC 1.00

F1 - Processing parameters  
SI 1024  
MC2 TPP1  
SF 400.1302293 MHz  
WDW QSINE  
SSB 2  
LB 0.00 Hz  
GB 0

AS15 1H



Current Data Parameters  
NAME 050426-as15  
EXPNO 4  
PROCNO 1

F2 - Acquisition Parameters  
Date\_ 20050426  
Time 19.58  
INSTRUM spect  
PROBHD 5 mm TXI 13C Z  
PULPROG cosygmftp  
TD 2048  
SOLVENT CDCl3  
NS 8  
DS 4  
SWH 3205.128 Hz  
FIDRES 1.565004 Hz  
AQ 0.3195380 sec  
RG 16  
DW 156.000 usec  
DE 6.00 usec  
TE 298.0 K  
d0 0.00000300 sec  
D1 2.00000000 sec  
d13 0.00000300 sec  
D16 0.00020000 sec  
d20 0.00120300 sec  
IN0 0.00015600 sec

==== CHANNEL f1 =====  
NUC1 1H  
P1 4.85 usec  
p2 9.70 usec  
PL1 0.00 dB  
SFO1 400.1320007 MHz

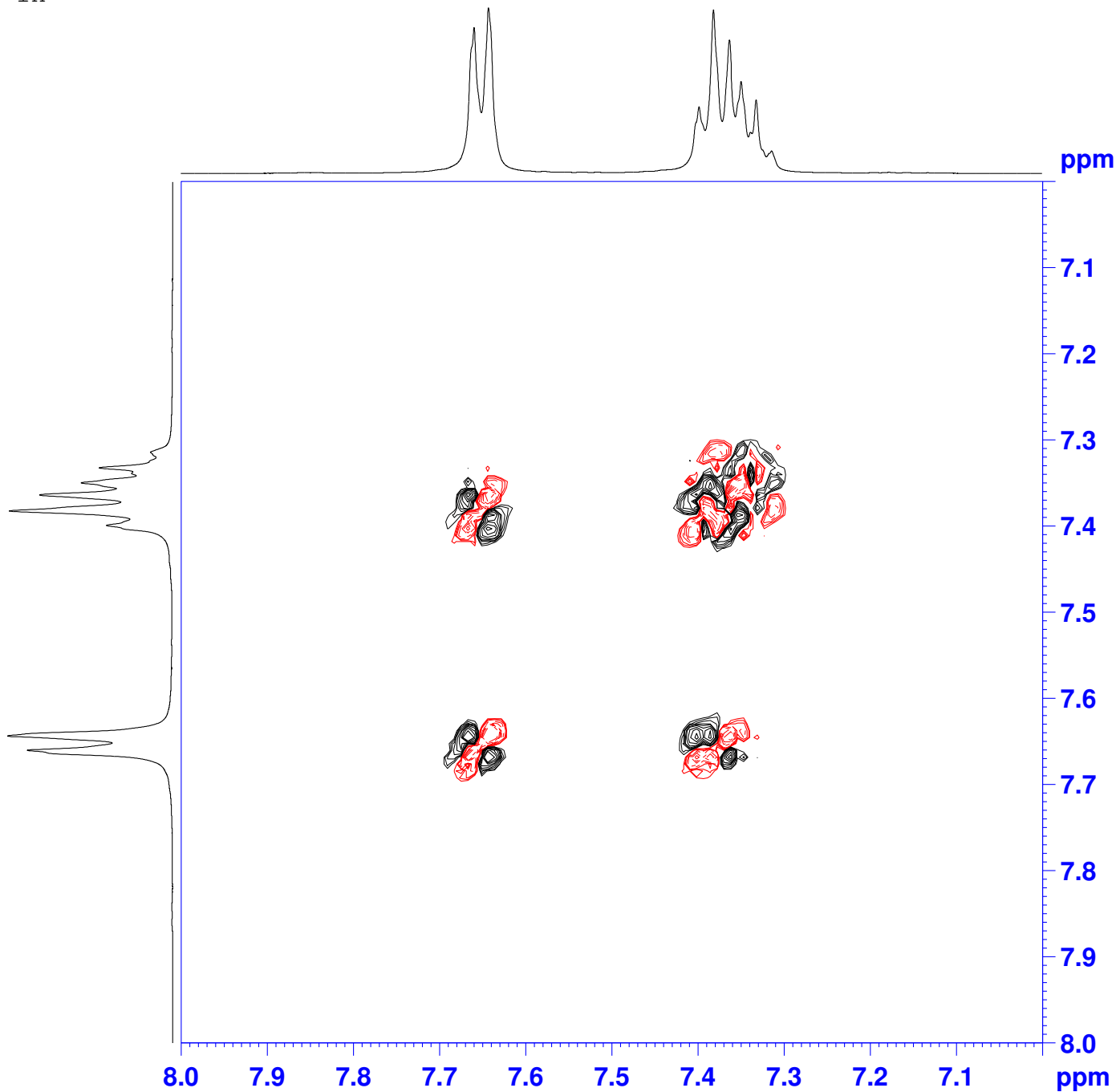
===== GRADIENT CHANNEL =====  
GPNAM1 SINE.100  
GPNAM2 SINE.100  
GPX1 0.00 %  
GPX2 0.00 %  
GPY1 0.00 %  
GPY2 0.00 %  
GPZ1 10.00 %  
GPZ2 20.00 %  
P16 1000.00 usec

F1 - Acquisition parameters  
ND0 2  
TD 512  
SFO1 400.1322 MHz  
FIDRES 6.260016 Hz  
SW 8.010 ppm  
FnMODE undefined

F2 - Processing parameters  
SI 1024  
SF 400.130067 MHz  
WDW QSINE  
SSB 2  
LB 0.00 Hz  
GB 0  
PC 1.00

F1 - Processing parameters  
SI 1024  
MC2 TPPI  
SF 400.1302293 MHz  
WDW QSINE  
SSB 2  
LB 0.00 Hz  
GB 0

AS15 1H



Current Data Parameters  
NAME 050426-as15  
EXPNO 4  
PROCNO 1

F2 - Acquisition Parameters  
Date\_ 20050426  
Time 19.58  
INSTRUM spect  
PROBHD 5 mm TXI 13C Z  
PULPROG cosygmftp  
TD 2048  
SOLVENT CDCl3  
NS 8  
DS 4  
SWH 3205.128 Hz  
FIDRES 1.565004 Hz  
AQ 0.3195380 sec  
RG 16  
DW 156.000 usec  
DE 6.00 usec  
TE 298.0 K  
d0 0.00000300 sec  
D1 2.00000000 sec  
d13 0.00000300 sec  
D16 0.00020000 sec  
d20 0.00120300 sec  
IN0 0.00015600 sec

===== CHANNEL f1 =====  
NUC1 1H  
P1 4.85 usec  
p2 9.70 usec  
PL1 0.00 dB  
SFO1 400.1320007 MHz

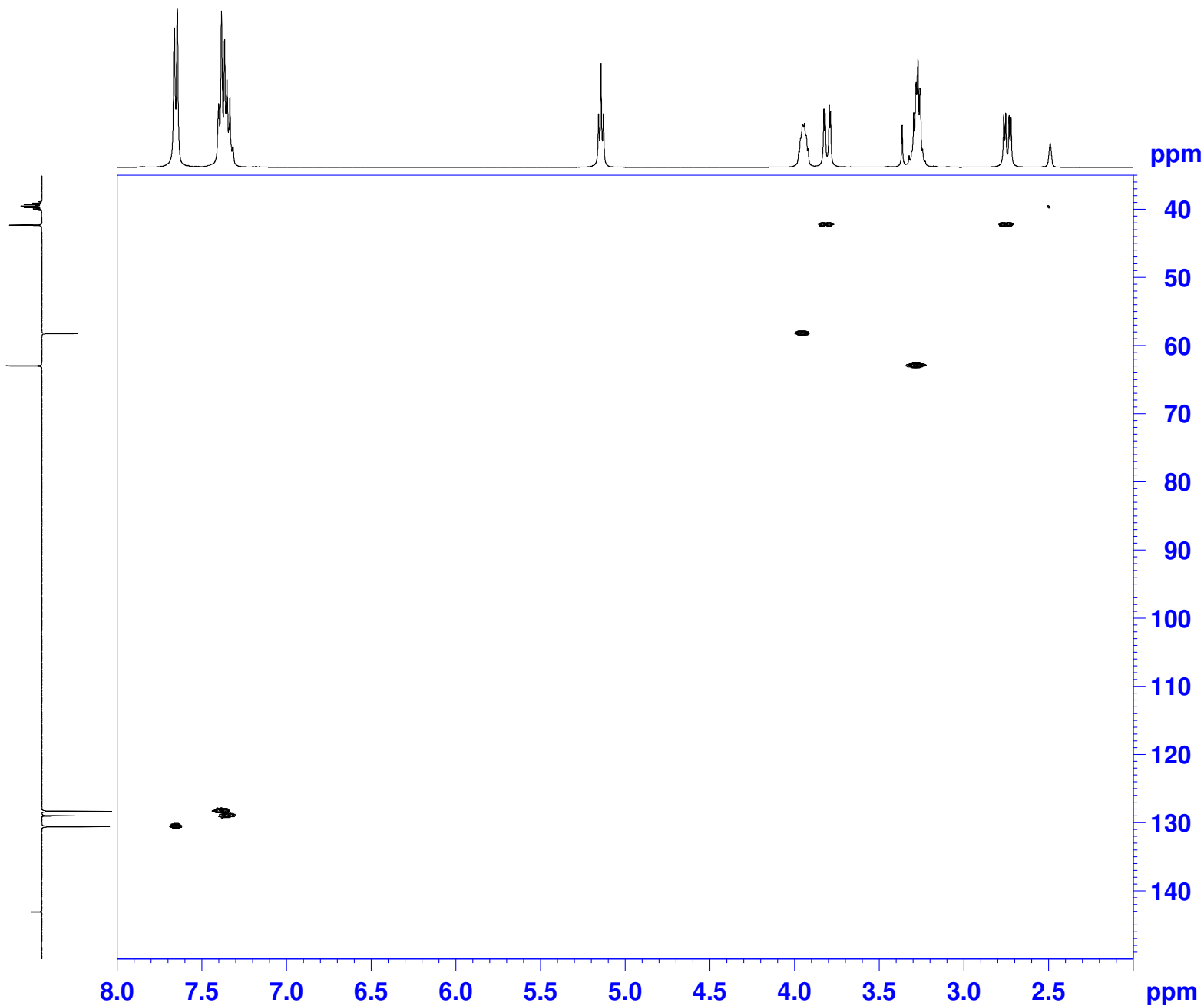
===== GRADIENT CHANNEL =====  
GPNAM1 SINE.100  
GPNAM2 SINE.100  
GPX1 0.00 %  
GPX2 0.00 %  
GPY1 0.00 %  
GPY2 0.00 %  
GPZ1 10.00 %  
GPZ2 20.00 %  
P16 1000.00 usec

F1 - Acquisition parameters  
ND0 2  
TD 512  
SFO1 400.1322 MHz  
FIDRES 6.260016 Hz  
SW 8.010 ppm  
FnMODE undefined

F2 - Processing parameters  
SI 1024  
SF 400.1300067 MHz  
WDW QSINE  
SSB 2  
LB 0.00 Hz  
GB 0  
PC 1.00

F1 - Processing parameters  
SI 1024  
MC2 TPPI  
SF 400.1302293 MHz  
WDW QSINE  
SSB 2  
LB 0.00 Hz  
GB 0

AS15 1H



```
Current Data Parameters
NAME      050426-as15
EXPNO     5
PROCNO    1

F2 - Acquisition Parameters
Date_     20050426
Time      22.41
INSTRUM   spect
PROBHD    5 mm TXI 13C Z
PULPROG   inv4gptp
TD         2048
SOLVENT   DMSO
NS         32
DS         8
SWH        3229.974 Hz
FIDRES     1.577136 Hz
AQ         0.3170804 sec
RG         4096
DW         154.800 usec
DE         6.00 usec
TE         298.0 K
CNST2     145.000000
d0         0.00000300 sec
D1         1.99631298 sec
d2         0.00344828 sec
d4         0.00172414 sec
d11        0.03000000 sec
d13        0.00000300 sec
D16        0.00020000 sec
d20        0.00052414 sec
d21        0.00224428 sec
IN0        0.00001490 sec

===== CHANNEL f1 =====
NUC1       1H
P1         4.85 usec
P2         9.70 usec
PL1        0.00 dB
SFO1       400.1320007 MHz

===== CHANNEL f2 =====
CPDPRG2    waltz16
NUC2       13C
P3         12.00 usec
P4         24.00 usec
PCPD2      100.00 usec
PL2        -6.00 dB
PL12       12.42 dB
SFO2       100.6202332 MHz

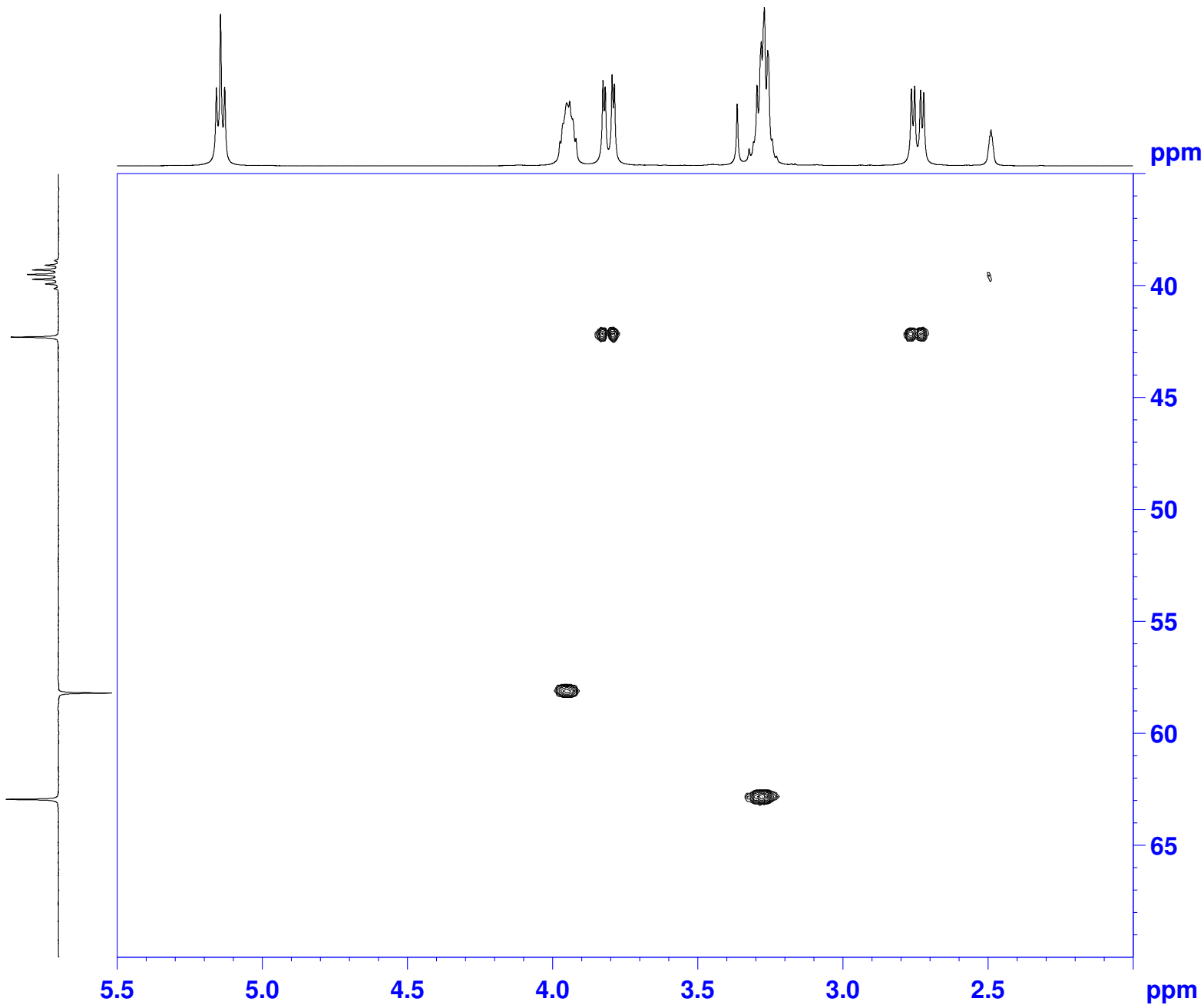
===== GRADIENT CHANNEL =====
GPNAM1     SINE.100
GPNAM2     SINE.100
GPNAM3     SINE.100
GPX1       0.00 %
GPX2       0.00 %
GPX3       0.00 %
GPY1       0.00 %
GPY2       0.00 %
GPY3       0.00 %
GPZ1       17.00 %
GPZ2       20.00 %
GPZ3       25.00 %
F16        1000.00 usec

F1 - Acquisition parameters
NDO        4
TD         256
SFO1       100.6202 MHz
FIDRES     65.541107 Hz
SW         166.751 ppm
FnMODE     undefined

F2 - Processing parameters
SI         2048
SF         400.130058 MHz
WDW        QSINE
SSB        2
LB         0.00 Hz
GB         0
PC         1.00

F1 - Processing parameters
SI         1024
MC2        TFP1
SF         100.6128314 MHz
WDW        QSINE
SSB        2
LB         0.00 Hz
GB         0
```

AS15 1H



Current Data Parameters  
NAME 050426-as15  
EXPNO 5  
PROCNO 1

F2 - Acquisition Parameters  
Date\_ 20050426  
Time 22.41  
INSTRUM spect  
PROBHD 5 mm TXI 13C Z  
PULPROG inv4gptp  
TD 2048  
SOLVENT DMSO  
NS 32  
DS 8  
SWH 3229.974 Hz  
FIDRES 1.577136 Hz  
AQ 0.3170804 sec  
RG 4096  
DW 154.800 usec  
DE 6.00 usec  
TE 298.0 K  
CNST2 145.000000  
d0 0.0000300 sec  
D1 1.99631298 sec  
d2 0.00344828 sec  
d4 0.00172414 sec  
d11 0.03000000 sec  
d13 0.0000300 sec  
D16 0.00020000 sec  
d20 0.00052414 sec  
d21 0.00224428 sec  
IN0 0.00001490 sec

===== CHANNEL f1 =====  
NUC1 1H  
P1 4.85 usec  
p2 9.70 usec  
PL1 0.00 dB  
SFO1 400.1320007 MHz

===== CHANNEL f2 =====  
CPDPRG2 waltz16  
NUC2 13C  
P3 12.00 usec  
p4 24.00 usec  
PCPD2 100.00 usec  
PL2 -6.00 dB  
PL12 12.42 dB  
SFO2 100.6202332 MHz

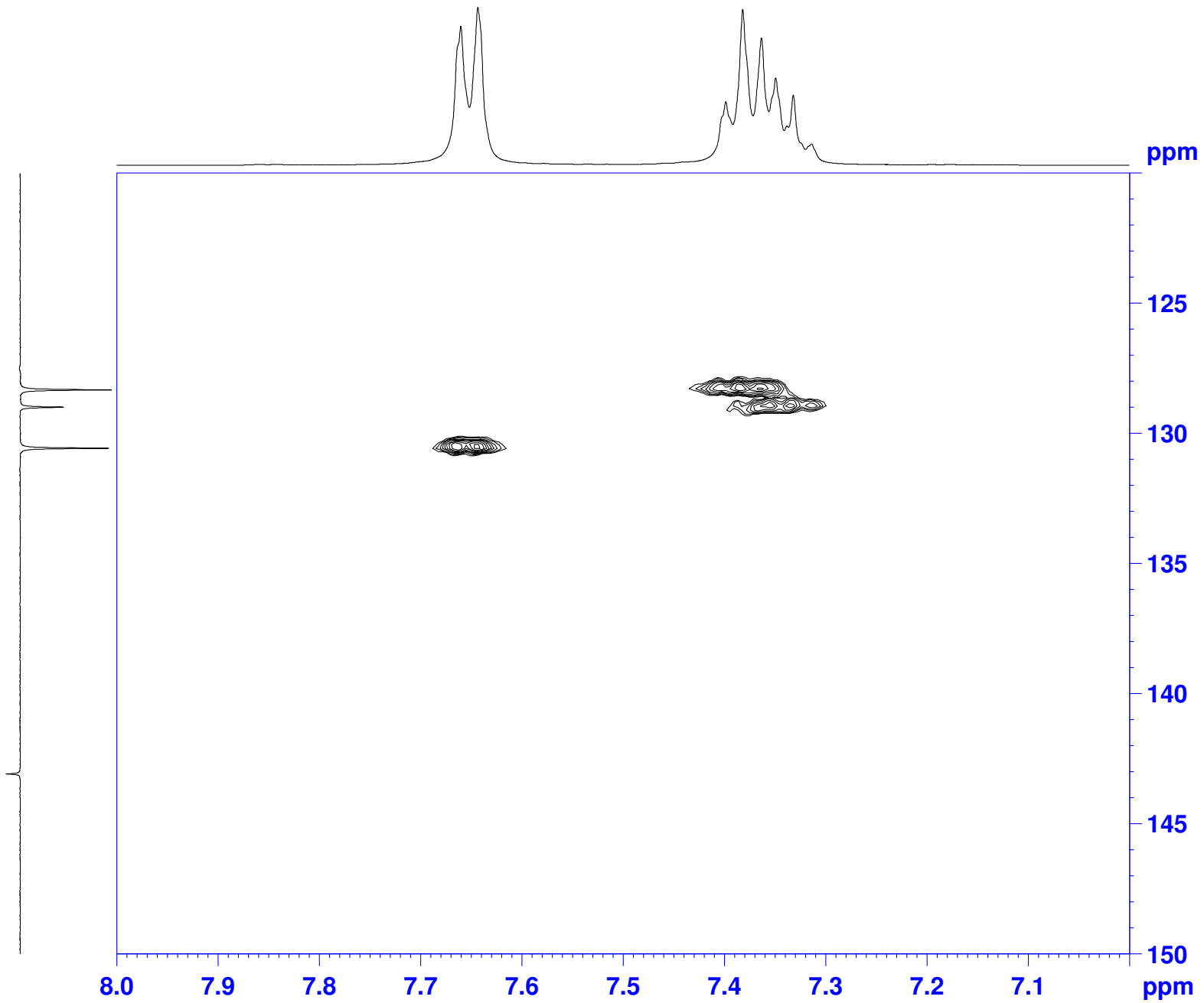
===== GRADIENT CHANNEL =====  
GPNAM1 SINE.100  
GPNAM2 SINE.100  
GPNAM3 SINE.100  
GPX1 0.00 %  
GPX2 0.00 %  
GPX3 0.00 %  
GPY1 0.00 %  
GPY2 0.00 %  
GPY3 0.00 %  
GPZ1 17.00 %  
GPZ2 20.00 %  
GPZ3 25.00 %  
P16 1000.00 usec

F1 - Acquisition parameters  
NDO 4  
TD 256  
SFO1 100.6202 MHz  
FIDRES 65.541107 Hz  
SW 166.751 ppm  
FnMODE undefined

F2 - Processing parameters  
SI 2048  
SF 400.1300058 MHz  
WDW QSINE  
SSB 2  
LB 0.00 Hz  
GB 0  
PC 1.00

F1 - Processing parameters  
SI 1024  
MC2 TPP1  
SF 100.6128314 MHz  
WDW QSINE  
SSB 2  
LB 0.00 Hz  
GB 0

AS15 1H



```
Current Data Parameters
NAME      050426-as15
EXPNO     5
PROCNO    1

F2 - Acquisition Parameters
Date_     20050426
Time      22.41
INSTRUM   spect
PROBHD    5 mm TXI 13C Z
PULPROG   inv4gptp
TD         2048
SOLVENT   DMSO
NS         32
DS         8
SWH        3229.974 Hz
FIDRES     1.577136 Hz
AQ         0.3170804 sec
RG         4096
DW         154.800 usec
DE         6.00 usec
TE         298.0 K
CNST2     145.000000
d0         0.00000300 sec
D1         1.99631298 sec
d2         0.00344828 sec
d4         0.00172414 sec
d11        0.03000000 sec
d13        0.00000300 sec
D16        0.00020000 sec
d20        0.00052414 sec
d21        0.00224428 sec
INO        0.00001490 sec

===== CHANNEL f1 =====
NUC1       1H
P1         4.85 usec
p2         9.70 usec
PL1        0.00 dB
SFO1       400.1320007 MHz

===== CHANNEL f2 =====
CPDPRG2    waltz16
NUC2       13C
P3         12.00 usec
p4         24.00 usec
PCPD2     100.00 usec
PL2        -6.00 dB
PL12       12.42 dB
SFO2       100.6202332 MHz

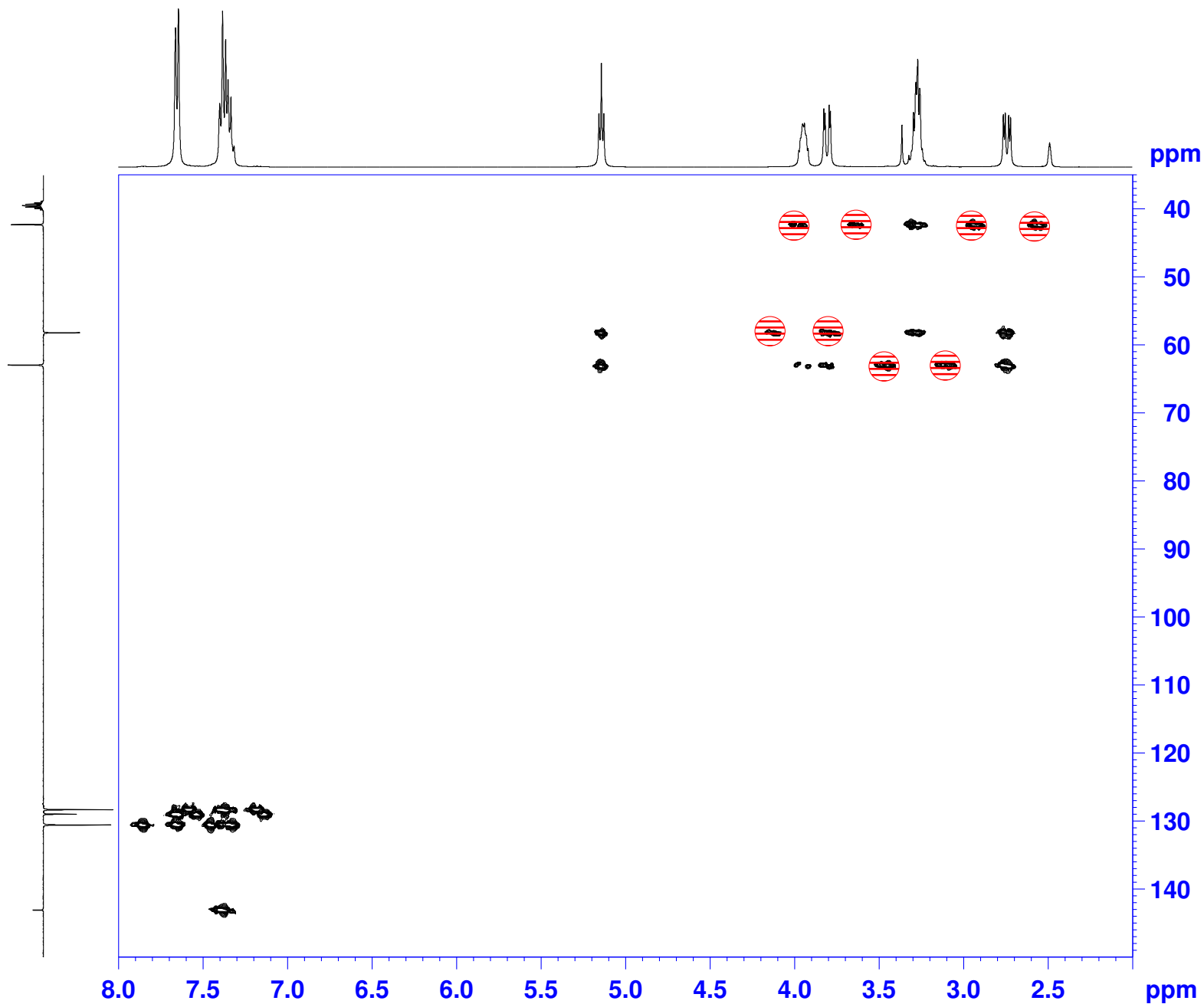
===== GRADIENT CHANNEL =====
GPNAM1     SINE.100
GPNAM2     SINE.100
GPNAM3     SINE.100
GPX1       0.00 %
GPX2       0.00 %
GPX3       0.00 %
GPY1       0.00 %
GPY2       0.00 %
GPY3       0.00 %
GPZ1       17.00 %
GPZ2       20.00 %
GPZ3       25.00 %
F16        1000.00 usec

F1 - Acquisition parameters
NDO        4
TD         256
SFO1       100.6202 MHz
FIDRES     65.541107 Hz
SW         166.751 ppm
FnMODE     undefined

F2 - Processing parameters
SI         2048
SF         400.1300058 MHz
WDW        QSINE
SSB        2
LB         0.00 Hz
GB         0
PC         1.00

F1 - Processing parameters
SI         1024
MC2        TFP1
SF         100.6128314 MHz
WDW        QSINE
SSB        2
LB         0.00 Hz
GB         0
```

AS15 1H



```
Current Data Parameters
NAME      050426-as15
EXPNO     6
PROCNO    1

F2 - Acquisition Parameters
Date_     20050427
Time      4.01
INSTRUM   spect
PROBHD    5 mm TXI 13C Z
PULPROG   inv4gplrnd
TD        2048
SOLVENT   DMSO
NS        48
DS        16
SWH       5341.880 Hz
FIDRES    2.608340 Hz
AQ        0.1917428 sec
RG        4096
DW        93.600 usec
DE        6.00 usec
TE        298.0 K
d0        0.00000300 sec
d1        1.50000000 sec
d6        0.06500000 sec
d13       0.00000300 sec
d16       0.00020000 sec
INO       0.0002240 sec

===== CHANNEL f1 =====
NUC1      1H
P1        4.85 usec
p2        9.70 usec
PL1       0.00 dB
SFO1      400.1320007 MHz

===== CHANNEL f2 =====
NUC2      13C
P3        12.00 usec
PL2       -6.00 dB
SFO2      100.6227346 MHz

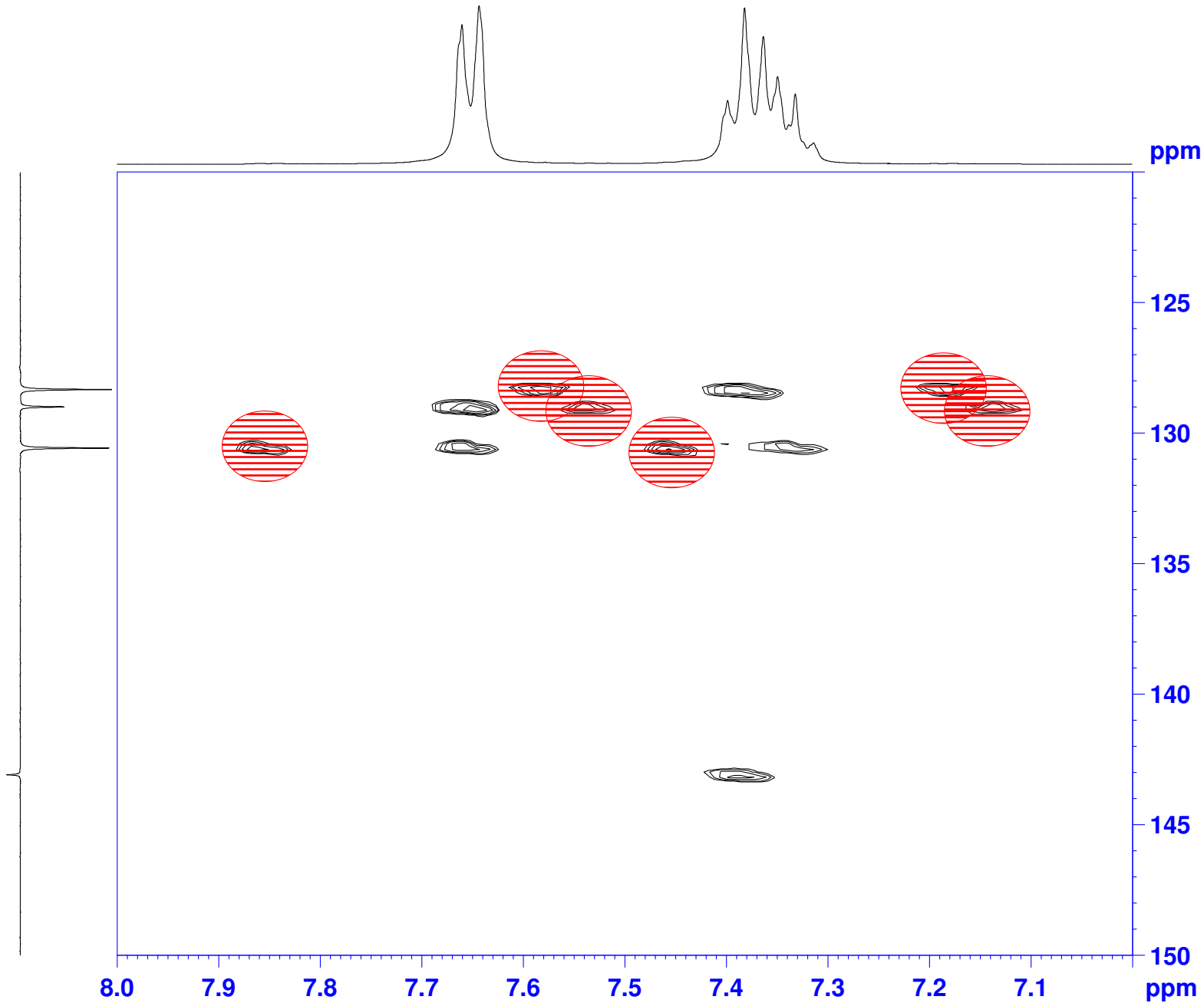
===== GRADIENT CHANNEL =====
GPNAM1    SINE.100
GPNAM2    SINE.100
GPNAM3    SINE.100
GPX1      0.00 %
GPX2      0.00 %
GPX3      0.00 %
GPY1      0.00 %
GPY2      0.00 %
GPY3      0.00 %
GPF1      50.00 %
GPF2      30.00 %
GPF3      40.10 %
P16       1000.00 usec

F1 - Acquisition parameters
ND0       2
TD        256
SFO1      100.6227 MHz
FIDRES    87.193077 Hz
SW        221.833 ppm
FnMODE    undefined

F2 - Processing parameters
SI        2048
SF        400.1300056 MHz
WDW       SINE
SSB       0
LB        0.00 Hz
GB        0
PC        1.00

F1 - Processing parameters
SI        1024
MC2       QF
SF        100.6128195 MHz
WDW       SINE
SSB       0
LB        0.00 Hz
GB        0
```

AS15 1H



```
Current Data Parameters
NAME      050426-as15
EXPNO     6
PROCNO    1

F2 - Acquisition Parameters
Date_     20050427
Time      4.01
INSTRUM   spect
PROBHD    5 mm TXI 13C Z
PULPROG   inv4gplrnd
TD         2048
SOLVENT   DMSO
NS         48
DS         16
SWH        5341.880 Hz
FIDRES     2.608340 Hz
AQ         0.1917428 sec
RG         4096
DW         93.600 usec
DE         6.00 usec
TE         298.0 K
d0         0.00000300 sec
d1         1.50000000 sec
d6         0.06500000 sec
d13        0.00000300 sec
d16        0.00020000 sec
IN0        0.0002240 sec

===== CHANNEL f1 =====
NUC1       1H
P1         4.85 usec
p2         9.70 usec
PL1        0.00 dB
SFO1       400.1320007 MHz

===== CHANNEL f2 =====
NUC2       13C
P3         12.00 usec
PL2        -6.00 dB
SFO2       100.6227346 MHz

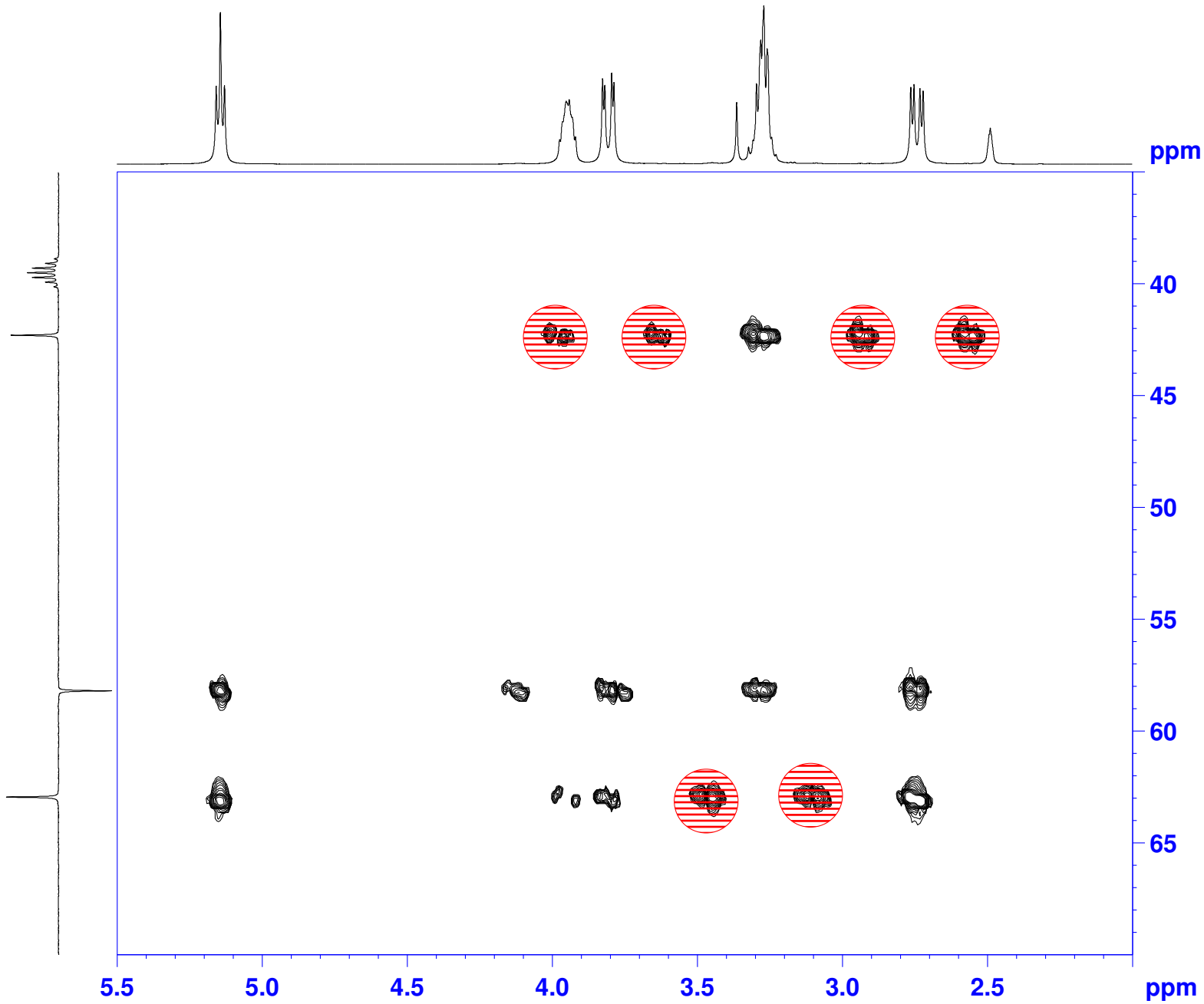
===== GRADIENT CHANNEL =====
GPNAM1    SINE.100
GPNAM2    SINE.100
GPNAM3    SINE.100
GPX1      0.00 %
GPX2      0.00 %
GPX3      0.00 %
GPY1      0.00 %
GPY2      0.00 %
GPY3      0.00 %
GPF1      50.00 %
GPF2      30.00 %
GPF3      40.10 %
P16       1000.00 usec

F1 - Acquisition parameters
ND0       2
TD         256
SFO1      100.6227 MHz
FIDRES     87.193077 Hz
SW         221.833 ppm
FnMODE    undefined

F2 - Processing parameters
SI         2048
SF         400.1300056 MHz
WDW        SINE
SSB        0
LB         0.00 Hz
GB         0
PC         1.00

F1 - Processing parameters
SI         1024
MC2        QF
SF         100.6128195 MHz
WDW        SINE
SSB        0
LB         0.00 Hz
GB         0
```

AS15 1H



```
Current Data Parameters
NAME      050426-as15
EXPNO     6
PROCNO    1

F2 - Acquisition Parameters
Date_     20050427
Time      4.01
INSTRUM   spect
PROBHD    5 mm TXI 13C Z
PULPROG   inv4gplrnd
TD         2048
SOLVENT   DMSO
NS         48
DS         16
SWH        5341.880 Hz
FIDRES     2.608340 Hz
AQ         0.1917428 sec
RG         4096
DW         93.600 usec
DE         6.00 usec
TE         298.0 K
d0         0.00000300 sec
d1         1.50000000 sec
d6         0.06500000 sec
d13        0.00000300 sec
d16        0.00020000 sec
INO        0.0002240 sec

===== CHANNEL f1 =====
NUC1       1H
P1         4.85 usec
p2         9.70 usec
PL1        0.00 dB
SFO1       400.1320007 MHz

===== CHANNEL f2 =====
NUC2       13C
P3         12.00 usec
PL2        -6.00 dB
SFO2       100.6227346 MHz

===== GRADIENT CHANNEL =====
GPNAM1     SINE.100
GPNAM2     SINE.100
GPNAM3     SINE.100
GPX1       0.00 %
GPX2       0.00 %
GPX3       0.00 %
GPY1       0.00 %
GPY2       0.00 %
GPY3       0.00 %
GPF1       50.00 %
GPF2       30.00 %
GPF3       40.10 %
P16        1000.00 usec

F1 - Acquisition parameters
ND0        2
TD         256
SFO1       100.6227 MHz
FIDRES     87.193077 Hz
SW         221.833 ppm
FnMODE     undefined

F2 - Processing parameters
SI         2048
SF         400.1300056 MHz
WDW        SINE
SSB        0
LB         0.00 Hz
GB         0
PC         1.00

F1 - Processing parameters
SI         1024
MC2        QF
SF         100.6128195 MHz
WDW        SINE
SSB        0
LB         0.00 Hz
GB         0
```